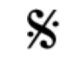





In The Style Of "The Girl From Ipanema"

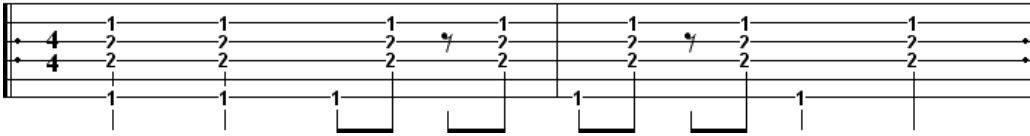
4/4 

F ^{j7}		G ^{7b5}	
G ^{m7}	F ^{#7b5}	F ^{j7}	F ^{#7b5}
F ^{#j7}		B ⁹	
F ^{#m7}		D ⁹	
G ^{m7}		E ^{b9}	
A ^{m7}	D ^{7b9}	G ^{m7}	C ^{7b9}
F ^{j7}			

D.S.   without repeat

 *Fine*

Rhythm Pattern:



Chords:

